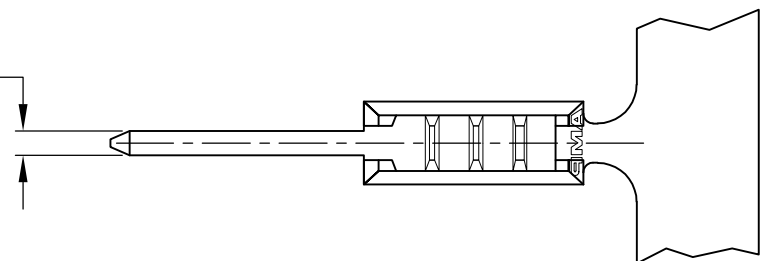
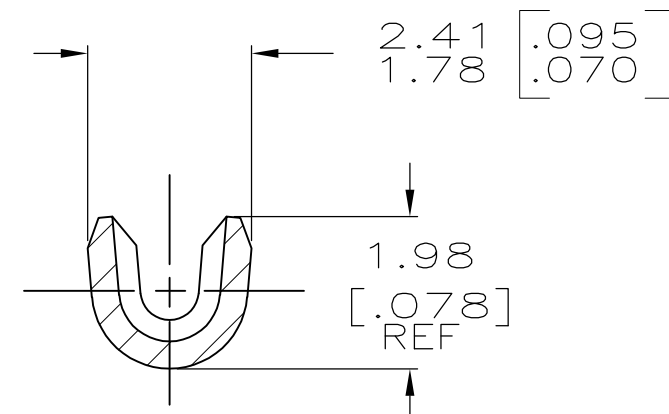
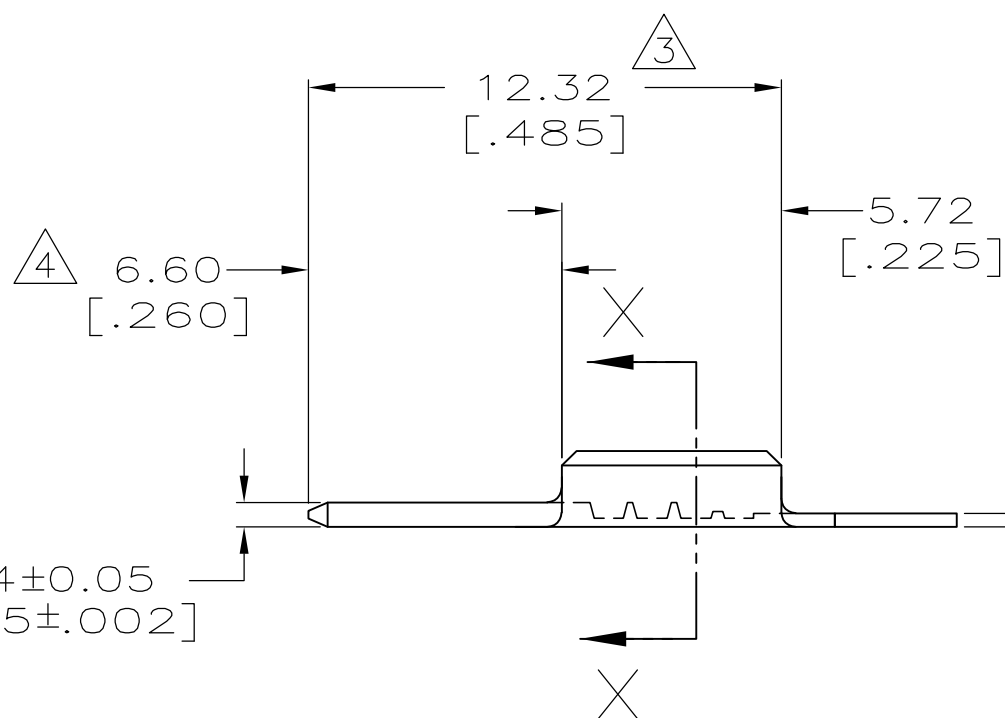


LOC	DIST	REVISIONS					
AF	50	P	LTR	DESCRIPTION	DATE	DWN	APVD
			J1	REVISED PER ECR-13-008677	28MAY13	PB	YHM

0.64±0.05
[.025±.002]



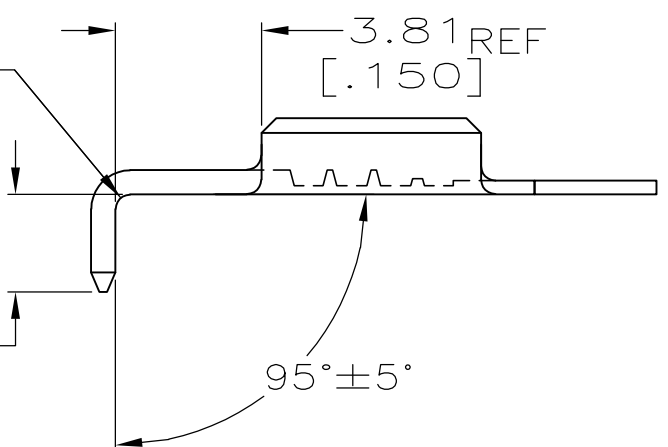
- 1 CONTINUOUS STRIP ON REELS
- 2 WIRE SIZE — TINSEL WIRE
INSULATION RANGE 0.76—0.89 [.030—.035] DIA.
- △3 GOLD PLATE OVER THIS AREA SHOWN.
- △4 GOLD FLASH THIS AREA ONLY OVER
NICKEL PLATE THE ENTIRE LENGTH.
- △5 0.002032 [.000080] MIN TIN OVER
0.00127 [.000050] MIN NICKEL.
- △6 PRELIMINARY — NOT FOR PRODUCTION



SECTION X—X
SCALE 10:1

Ⓜ1	REVERSE REEL OF -1	△5	61684-5
	REVERSE REEL OF -1	△4	61684-3
OBSOLETE	REVERSE REEL OF -1	△3	61684-2
OBSOLETE		△3	61684-1
	REMARKS	FINISH	PART NO.

R0.38
[.015]



TO BE BENT IN APPLICATOR
FOR 61684-5 ONLY

THIS DRAWING IS A CONTROLLED DOCUMENT.		DWN JR RUTH 18JUL00	AMP Incorporated Harrisburg, PA 17105-3608	
DIMENSIONS: MM [INCHES]		CHK MS FEHER 18JUL00	AMP	
TOLERANCES UNLESS OTHERWISE SPECIFIED:		APVD G PORTA 18JUL00	NAME	
0 PLC ±-		PRODUCT SPEC	TAB, SPECIAL	
1 PLC ±-		APPLICATION SPEC	SIZE CAGE CODE DRAWING NO RESTRICTED TO	
2 PLC ±0.25 [.010]		WEIGHT	A3 00779	C- 61684
3 PLC ±-		CUSTOMER DRAWING	SCALE 5:1	SHEET 1 OF 1 REV J1
4 PLC ±-				
ANGLES ±-				
MATERIAL H04 BRASS	FINISH SEE TABLE			